



[Introducing the Cumberland Packaging management team](#)

Whilst we're justifiably proud of our leading edge manufacturing machinery, systems and software...it is the quality, attitude and consistency of our people that makes such a collective difference to our clients' experience of trading with us, our quality and our competitiveness.

I'd like to use this opportunity to introduce our management team; the talented and dedicated souls who undertake the day-to-day running of our business to ensure that we meet our customers' needs as consistently, efficiently and reassuringly as possible. They've been with Cumberland Packaging for a combined 150 years; growing and learning as the business has developed to become a top five UK sheet plant; blossoming into the excellent team that they are today.

John Watson, Managing Director



[Paul Hammans | Senior Operations Manager](#)

Paul Hammans is one of our two Senior Operations Managers; he looks after the office with a relentless efficiency and phenomenal work ethic. Paul joined the business 32 years ago as a fork lift driver and has diligently worked his way through the ranks to become an invaluable member of the management team.

With the calm and unerring reliability of a fire-and-forget missile, you only need to ask him once and can move on; safe in the knowledge that the requested task (big or small) will be quietly taken care of.

[Mark Bennett | Senior Operations Manager](#)



The reassuring broad shoulders of our other Senior Operations Manager, Mark Bennett, look after Operations. He joined us in 2002 as a Casemaker Operator and quickly caught the eye as a persuasive, thoughtful problem-solver with a can-do approach to any situation. So it was no surprise when he also excelled upon promotion to production management in 2007.

His previous experience as a litho printer taught him the value of attention to detail and we also benefit greatly from his NVQ in Fibreboard Conversion; he's qualified to do his job from both an academic and hands-on perspective.

[Jan Monaghan | Accounts Manager](#)



Jan Managhan manages our finance department with resolve, purpose and grip in equal measure. Deadlines are met with the year-round metronomic reliability that results from an experienced team, with finley honed procedures that run like clockwork.

Jan joined us in 1990 on a part time basis in accounts and shone with quiet, unflappable competence. A decade later she took the helm as our Accounts Manager and has led the team with unerring accuracy ever since.

She takes a well-earned break when she can in her home in the Costa Del Sol. Whilst her Spanish is coming along slowly, she remains fluent in the language of finance!

[Steve Weir | Transport Manager](#)



Steve Weir is our ever-positive, wonderfully flexible and utterly reliable Transport Manager.

He joined us 30 years ago as a driver. After three years he was promoted to our Planning department and returned to manage the Transport function 20 years ago.

Since then the business has grown significantly and his department now includes: three warehouses as well as the main factory in Shoeburyness (storing a total of circa 5,500 pallets); 11 drivers; one 12 tonne vehicle; five 18 tonne vehicles and five tractor units with 40 foot trailers.

Steve has managed a boys' football team for 15 years and recently taken up golf. Saturdays are devoted to utilising his season ticket at his beloved West Ham.

[Sam Field | Design Manager](#)



Sam Field is our infectiously dedicated and impressively innovative Design Manager. His work ethic and commitment to delighting customers and colleagues alike can be disarming to the point of being humbling. He's also very, very good at his job...so

much so that he's effectively become the I.T. guru for the business.

He's the same outside the office, where his long hours of weekly weight training at the gym and meticulous diet have yielded serious biceps and pecs. It's clear that he puts everything into whatever he does.



Michelle Culverhouse | Assistant Manager

Michelle Culverhouse was promoted to Assistant Manager in the office last summer (that's her standing in the picture). She has a laser-like focus that burns through admin and a quiet, steely resolve that overcomes obstacles.

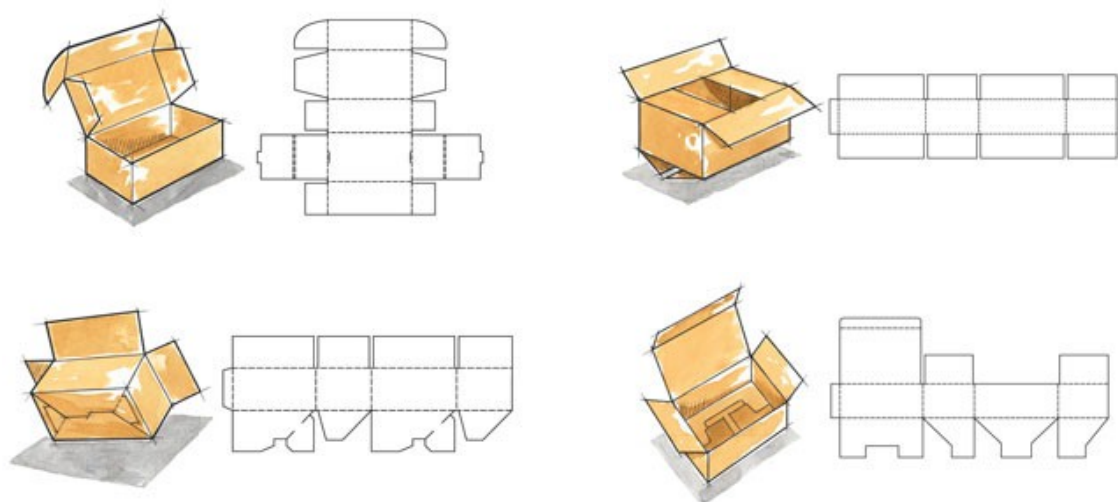
Michelle joined us three years ago and it was immediately apparent that she could administrate for her country if it was an Olympic sport; we're fortunate to have her on board.



Krzysztof Kropidlowski | Assistant Manager

The wonderfully competent soul that is Krzysztof Kropidlowski was promoted to Assistant Manager last Spring. Having started as a Gluer Operator and then moving into a leadership role as a case Maker Supervisor, he now leads a team of 50 colleagues. Krzysztof has come up through the ranks because of his can-do attitude, intense intelligence, phenomenal work ethic and more warmth than you can shake a stick at.

The results speak for themselves - we are producing record volumes. To be fair, we need more machinery and more colleagues to finish catching up with and then overtaking peaks in demand; we're bringing on this resource in the coming weeks.



Cumberland Packaging



GLOBAL STANDARD
FOR PACKAGING & PACKAGING MATERIALS



Ethical Trading Initiative
Respect for workers worldwide



Sheet
Plant
Association

"...promoting business excellence"

Promoting best practice:

- We are certified for BRC/IOP as well as Ethical Trading.
- We passed our FSC audit in January 2017.
- We're also a member of the Sheet Plant Association.

[Check out our website](#)

Copyright © 2022 Cumberland Packaging Limited, All rights reserved.

[unsubscribe from this list](#) [update subscription preferences](#)

